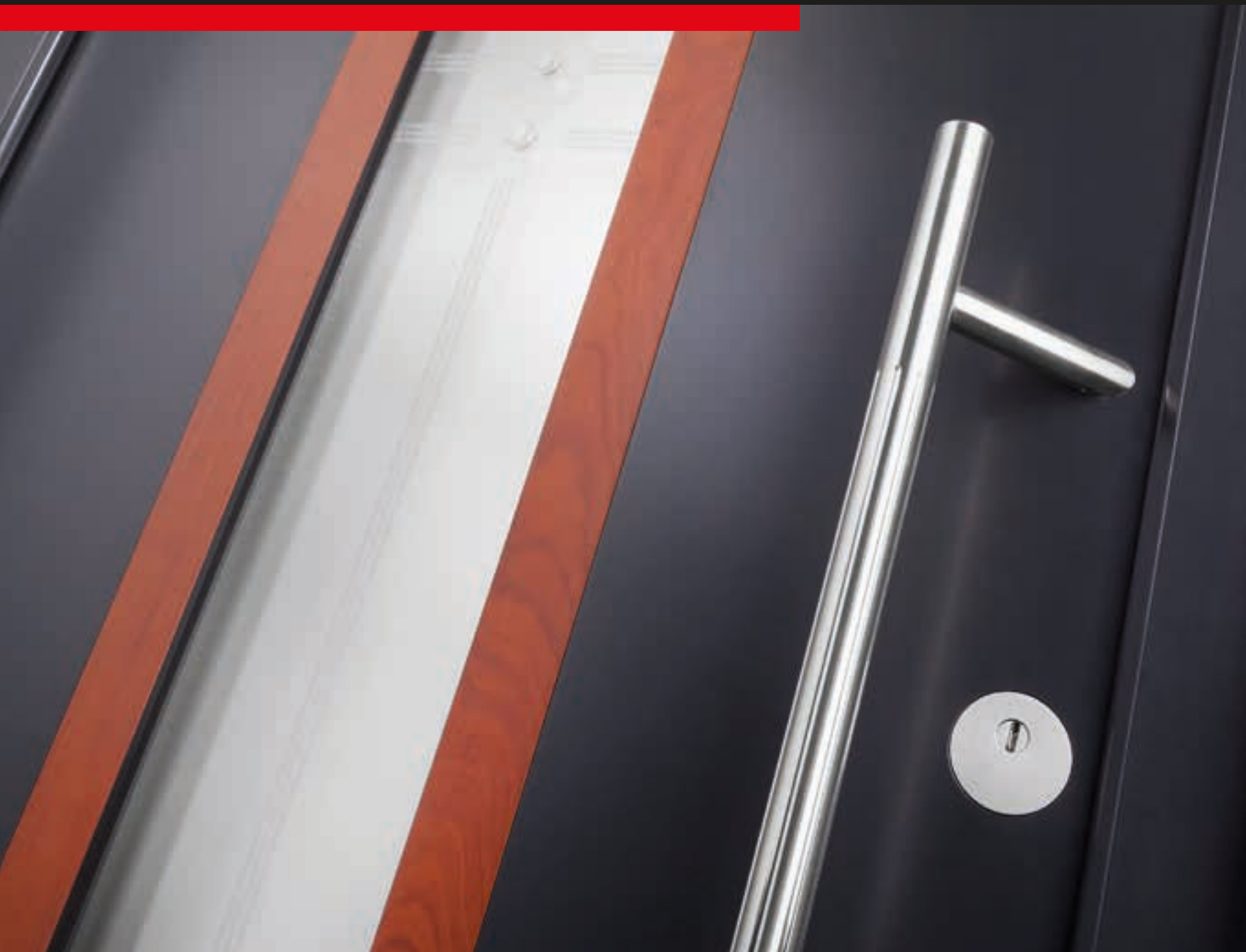


Live the way you are – naturally individual:
UNILUX aluminium clad wood entry doors



ALUMINIUM CLAD WOOD ENTRY DOOR OVERVIEW



WHERE QUALITY IS AT HOME



Type 1206
Color RAL 3004 Purple red

Content

UNILUX: Where quality is at home	4-5
All good things come in sixes: The UNILUX brand advantages	6-7
Advantages of aluminium clad wood	8-9
UNILUX's aluminium clad wood entry doors line DESIGN	10-33
UNILUX's aluminium clad wood entry doors line ELEGANCE	34-51
UNILUX's aluminium clad wood entry doors line HISTORY	52-61
UNILUX's aluminium clad wood side doors	62-65
Freedom to choose shapes and materials	66-71
Glass	72-75
Hardware	76-83
Security	84-87
Overview	88-89
The reliability of a big name	90-91

Live the way you are – naturally individual: UNILUX aluminium clad wood entry doors





UNILUX

One brand. One promise.

The only thing modern-day doors have in common with their "ancestors" is their name. Good carpentry work and appearance alone is no longer enough, because energy efficiency, safety, and functionality standards have increased dramatically to meet today's customer needs.

That's why all UNILUX aluminium clad wood entry doors are in-house developments, demonstrating an extraordinary degree of product intelligence and complex engineering.

To ensure these masterpieces are not just available to a selected group of people, UNILUX produces them as series, enabling the unique aluminium clad wood products to be sold at prices which make top quality affordable.

UNILUX – where quality is at home

All good things come in sixes:

The UNILUX brand advantages

Brand advantage 1: Durability

Each of our aluminium clad wood entry doors have solid panels up to 3¹/₈"/79 mm thick. The door panels are reinforced with steel, giving them an integrated anti-warp system. The high-quality workmanship and strict quality controls ensure you gain long-term enjoyment from your UNILUX door.

Brand advantage 2: Freedom of design

Tastes are subjective. That's why you can choose from no less than 40 models. And that's just the start of it. You can design each of these models to suit your own requirements. From selection of the wood, to the color scheme (all RAL colors and special wood shades), to the glass and handle. Variety works.

Brand advantage 3: Energy efficiency

UNILUX's solid construction style not only guarantees durability, but also help save energy. Each of our aluminium clad wood entry doors has state of the art "warm-edge" spacers between the glass panes, ensuring better thermal values, greater comfort near the window, and significantly reduced condensation build-up during colder months. Each UNILUX door is also available with optional 1⁵/₈"/40 mm thick triple glazing, further reducing heating costs.



A close-up, high-angle photograph of a modern door handle and lock mechanism. The handle is a sleek, cylindrical metal piece, and the lock is a matching cylindrical component with a series of small, evenly spaced holes along its length. The background is a dark, reflective surface, likely the door itself, which shows some light reflections and a diagonal line. The overall aesthetic is clean and modern.

Brand advantage 4: Safety

Sometimes a front door's job is not just to keep out wind and rain, but also uninvited guests. That's why all UNILUX locking parts are made from high-quality materials. Each of our aluminium clad wood entry doors also has two anti-lift devices on the hinge side and an integrated triple self-locking multi-point system as a standard.

Brand advantage 5: Service

UNILUX only works with expertly qualified specialist retailers, located across the country with their own showrooms. Your regional UNILUX retailer will offer you detailed advice and assist you with your plans. It will also ensure prompt, correct assembly, and will be available at any time if you have any service-related needs.

Brand advantage 6: Brand quality

Since 1955, UNILUX's philosophy has been: Only products of uncompromising quality must leave the factory. This saw our company become a recognised quality leader over the decades. Anyone who pays heed to the UNILUX logo can be certain of always receiving a "Made in Germany"-branded product.

Live the way you are – naturally individual: UNILUX aluminium clad wood entry doors



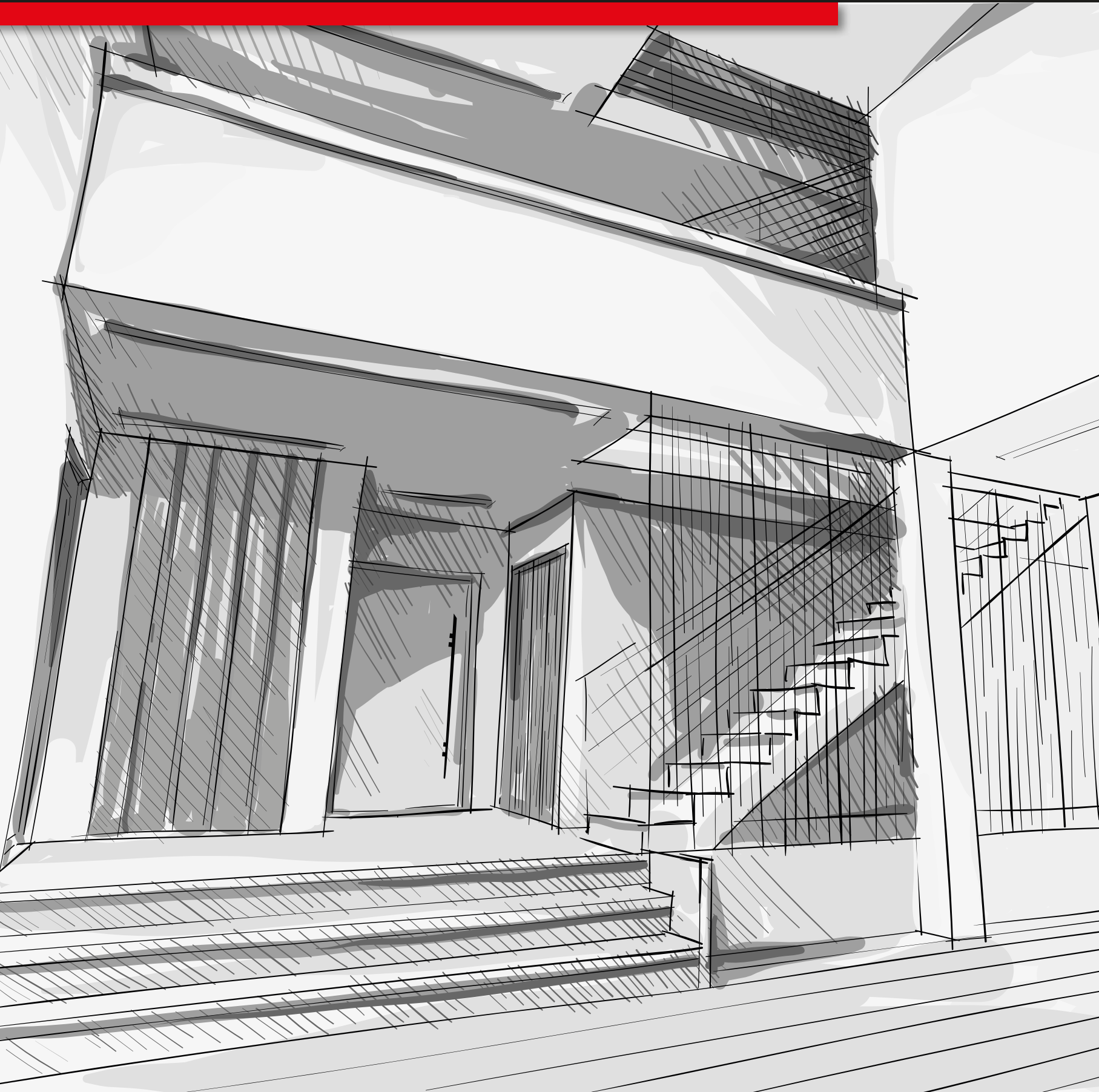
ADVANTAGES OF ALUMINIUM CLAD WOOD

Aluminium on the outside, pure wood on the inside – combined for generations

Wood creates comfort – it is a feel-good material. Aluminium, on the other hand, is robust – a protective shield against the elements. Together, they form an aluminium clad wood product which lasts generations without the need for continuous maintenance.

The wood interior does not require UV protection in the form of coloring pigments in the finish. It can be used in its natural form thanks to the aluminium cladding. The cladding firmly encases the wood, protecting it from the elements while still giving room to expand and contract and cope perfectly with temperature fluctuations.

UNILUX aluminium clad wood entry doors: The originals.



UNILUX'S DOOR LINE DESIGN

Trend-setting.
Purist.
Modern.

Perhaps the most important basic rule of a good design: Less is more. In order to be effective, forms should not be overloaded or exaggerated, because only by doing away with superfluous embellishments does the true essence of an object come clearly to the fore. A nice by-product of this is the fact that people never tire of looking at clean lines.

**The DESIGN line represents contemporary style.
Uncompromising in its aesthetic demands, it is intended for
sophisticated and challenging architecture.**

The DESIGN line – reduced to the essential elements.





Type 1100

LivingLine aluminium cladding
Color DB 703
External handle 7007
Flush protective rosette



Type 1100

LivingLine aluminium cladding
Color RAL 3004 Purple red
External handle 7007
Flush protective rosette
Stainless-steel base



Type 1100

LivingLine aluminium cladding
Color RAL 5011 Steel blue
External handle 7007
Flush protective rosette
Stainless-steel base



Type 1101 Internal view

Oak wood
Color EI 151 Dark oak
Internal knob 2002



Type 1101

ModernLine aluminium cladding
Color RAL 7035 Light grey
Flush stainless-steel pilaster strips
External handle 7042 indented
Protective rosette



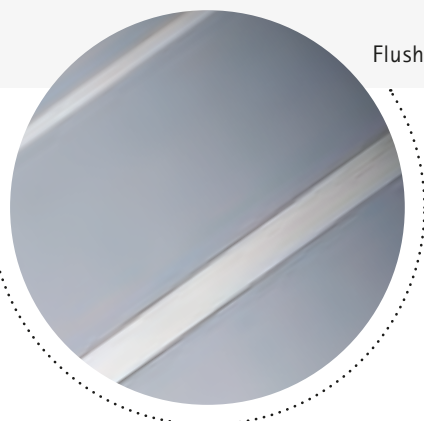
Type 1101

ModernLine aluminium cladding
Color Blue, white-pigmented
External handle 7042 indented
Protective rosette



Type 1101

ModernLine aluminium cladding
Color RAL 3004 Purple red
Flush stainless-steel pilaster strips
External handle 7042 indented
Protective rosette
Stainless-steel base



Flush stainless-steel pilaster strips



Type 1101 Internal view

Pine wood
Color KI 123 Red Montana
Cross-veneered
Internal knob 2008



Type 1104

LivingLine aluminium cladding
Color RAL 9016 Traffic white
External handle 6001
Flush protective rosette
Stainless-steel base



Type 1104

LivingLine aluminium cladding
Color RAL 7035 Light grey
External handle 6001
Flush protective rosette



Type 1104

LivingLine aluminium cladding
Color RAL 7016 Anthracite grey
Flush stainless-steel pilaster strips
External handle 6001
Flush protective rosette
Stainless-steel base



Type 1104 Internal view

Larch wood
Color LR 137 transparent matt
Internal knob 2001



Type 1105

LivingLine aluminium cladding
Colors DB 703 and RAL 9007 Grey aluminium
Glass 839 (sandblasting on Reflo, with bevels)
External handle 7031
Flush protective rosette
Stainless-steel base



Type 1105

LivingLine aluminium cladding
Color RAL 7015 Slate grey
Glass 839 (sandblasting on Reflo, with bevels)
External handle 7031
Flush protective rosette
Stainless-steel base



Type 1105

LivingLine aluminium cladding
Colors RAL 9016 Traffic white and RAL 7040 Window grey
Clear glass
External handle 7031
Flush protective rosette



Bevels as a highlight of the glass



Type 1105 Internal view

Pine wood
Color KI 146 Grey, transparent
Glass 839 (sandblasting on Reflo, with bevels)
Internal knob 2005



Type 1106

ModernLine aluminium cladding
Colors RAL 7035 Light grey and RAL 3004 Purple red
Glass 840 (Float with sandblasting and polished notched bevel)
External handle 7027
Flush protective rosette
Stainless-steel base



Type 1106

ModernLine aluminium cladding
Colors RAL 7016 Anthracite grey and RAL 9016 Traffic white
Vertical BiCannes glass
External handle 7027
Flush protective rosette



Type 1106

ModernLine aluminium cladding
Color DB 703
Glass 840 (Float with sandblasting and polished notched bevel)
External handle 7027
Flush protective rosette



Type 1106 Internal view

Larch wood
Color LR 147 Tineo
Glass 840 (Float with sandblasting and polished notched bevel)
Internal knob 2013



Type 1101

Color RAL 8003 Clay brown



Type 1106

Colors RAL 7035 Light grey and
RAL 2013 Pearl orange



Type 1107

Color RAL 9016 Traffic white



Type 1107

ModernLine aluminium cladding
Color DB 703
Glass 842 (Sandblasting pattern on clear glass)
External handle 7027
Protective rosette
Stainless-steel base



Type 1107

ModernLine aluminium cladding
Color RAL 7035 Light grey
Glass 841 glass (Sandblasting pattern on clear glass)
External handle 7027
Protective rosette



Type 1107

ModernLine aluminium cladding
Color RAL 3020 Traffic red
Weed glass, simply frosted on clear glass
External handle 7027
Protective rosette



Type 1107 Internal view

Pine wood
Color KI 140 Walnut transparent II
Glass 842 (Sandblasting pattern on clear glass)
Internal knob 2002



Type 1109

LivingLine aluminium cladding
Color DB 703
Horizontal Basic Madras glass
External handle 7031
Protective rosette



Type 1109

LivingLine aluminium cladding
Color RAL 3013 Tomato red
Masterligne glass
External handle 7031
Protective rosette
Stainless-steel base



Type 1109

LivingLine aluminium cladding
Color RAL 9007 Grey aluminium
Flamme glass
External handle 7031
Protective rosette



Type 1109 Internal view

Alder wood
Color ER 136 transparent
Masterligne glass
Internal knob 2006



Type 1108

ModernLine aluminium cladding
Color RAL 7035 Light grey
Glass 843 (Reflo with polished notched bevel and three glass stones)
External handle 7027
Protective rosette



Type 1108

LivingLine aluminium cladding
Color RAL 3001 Signal red
Flamme glass
External handle 7027
Protective rosette
Stainless-steel base



Type 1108

ModernLine aluminium cladding
Color DB 703
Glass 842 (Sandblasting pattern on clear glass)
External handle 7027
Protective rosette
Stainless-steel base



Type 1108 Internal view

Pine wood
Color KI 143 Tobacco
Glass 843 (Reflo with polished notched bevel and three glass stones)
Internal knob 2007



Type 1110

ModernLine aluminium cladding
Color DB 703
Ocean Blue glass
External handle 7036
Flush protective rosette
Stainless-steel base



Type 1110

ModernLine aluminium cladding
Color RAL 1015 Light ivory
Glass 844 (sandblasting on Reflo, four glass stones and ruby red panel)
External handle 7036
Flush protective rosette



Type 1110

ModernLine aluminium cladding
Color RAL 3001 Signal red
844 (sandblasting on Reflo, four glass stones and ruby red panel)
External handle 7036
Flush protective rosette
Stainless-steel base



Flush protective rosette



Type 1110 Internal view

Pine wood
Color KI 117 Beech
Glass 844 (sandblasting on Reflo, four glass stones and ruby red panel)
Internal knob 2007



Type 1113

LivingLine aluminium cladding
Color RAL 9016 Traffic white
Clear glass
External handle 7033
Protective rosette
Stainless-steel base



Type 1113

LivingLine aluminium cladding
Colors RAL 7015 Slate grey
and RAL 7035 Light grey
Punto glass
External handle 7033
Protective rosette



Type 1113

LivingLine aluminium cladding
Color RAL 7016 Anthracite grey
Reflo glass
External handle 7033
Protective rosette
Stainless-steel base



Type 1113 Internal view

Pine wood
Color KI 137 transparent matt
Reflo glass
Internal knob 2001



Type 1110

Color DB 703



Type 1100

Color DB 703



Type 1113

Color RAL 7016 Anthracite grey



Type 1114

- ModernLine aluminium cladding
- Color RAL 7035 Light grey
- Ocean Blue glass
- External handle 7040
- Flush protective rosette



Type 1114

- ModernLine aluminium cladding
- Color DB 703
- Uadi glass
- External handle 7040
- Flush protective rosette
- Stainless-steel base



Type 1114

- ModernLine aluminium cladding
- Color RAL 5020 Ocean blue
- Punto glass
- External handle 7040
- Flush protective rosette
- Stainless-steel base



Type 1114 Internal view

- Larch wood
- Color LR 149 American Cherry
- Uadi glass
- Internal knob 2001



Type 1115

LivingLine aluminium cladding
Color DB 703
Glass 846 (Clear glass and sand-
blasting, separated by a black line)
External handle 7018
Flush protective rosette
Stainless-steel base



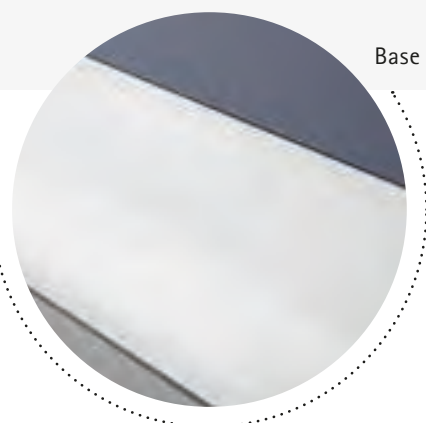
Type 1115

LivingLine aluminium cladding
Color RAL 7015 Slate grey
Pave glass
External handle 7018
Flush protective rosette
Stainless-steel base



Type 1115

LivingLine aluminium cladding
Color Blue, white-pigmented
Glass 846 (Clear glass and sand-
blasting, separated by a black line)
External handle 7018
Flush protective rosette



Base made from stainless steel



Type 1115 Internal view

Pine wood
Color KI 117 Beech
Glass 846 (Clear glass and sand-
blasting, separated by a black line)
Internal knob 2002



Type 1126

ModernLine aluminium cladding
Color RAL 9016 Traffic white
Glass 856 (sandblasting pattern on Float)
External handle 7041 indented
Flush protective rosette



Type 1126

ModernLine aluminium cladding
Color RAL 7016 Anthracite grey
Thela glass
External handle 7041 indented
Flush protective rosette



Type 1126

ModernLine aluminium cladding
Colors RAL 3013 Tomato red and RAL 7016 Anthracite grey
Glass 856 (sandblasting pattern on Float)
External handle 7041 indented
Flush protective rosette



Type 1126 Internal view

Larch wood
Color LR 140 Walnut transparent II
Glass 856 (sandblasting pattern on Float)
Internal knob 2007



Type 1128

LivingLine aluminium cladding
Colors RAL 3022 Salmon pink and
RAL 7016 Anthracite grey
Glass 857 (Sandblasting strips with
rods on Reflo)
External handle 7048
Square protective rosette



Type 1128

LivingLine aluminium cladding
Color RAL 7016 Anthracite grey
Reflo glass
External handle 7048
Square protective rosette
Stainless-steel base



Type 1128

LivingLine aluminium cladding
Colors RAL 9016 Traffic white
and RAL 7016 Anthracite grey
Clear glass
External handle 7048
Square protective rosette
Stainless-steel base



Type 1128 Internal view

Larch wood
Color LR 146 Grey, transparent
Reflo glass
Internal knob 2002



Type 1201

LivingLine aluminium cladding
Color 9007 Grey aluminium
Glass 858 (Satinato and sand-
blasting on clear glass with three
glass stones)
External handle 7037
Protective rosette



Type 1201

LivingLine aluminium cladding
Color RAL 7015 Slate grey
Glass 858 (Satinato and sand-
blasting on clear glass with three
glass stones)
External handle 7037
Protective rosette



Type 1201

LivingLine aluminium cladding
Color RAL 5020 Ocean blue
Reflo glass
External handle 7037
Protective rosette



Type 1201 Internal view

Alder wood
Color ER 137 transparent matt
Glass 858 (Satinato sandblasting on
clear glass with three glass stones)
Internal knob 2007



Type 1201

Color RAL 7015 Slate grey



Type 1114

Color RAL 5020 Ocean blue



Type 1126

Color RAL 9016 Traffic white



Type 1202

LivingLine aluminium cladding
Color RAL 3020 Traffic red
Vertical BiCannes glass
External handle 7033
Protective rosette



Type 1202

LivingLine aluminium cladding
Color DB 703
Weed glass, simply frosted on
clear glass
External handle 7033
Protective rosette



Type 1202

LivingLine aluminium cladding
Color Blue, white-pigmented
Clear glass
External handle 7033
Protective rosette



Type 1202 Internal view

Oak wood
Color EI 143 Tobacco
Vertical BiCannes glass
Internal knob 2002



Type 1112

LivingLine aluminium cladding
Color DB 703
Clear glass
External handle 7013
Protective rosette



Type 1112

LivingLine aluminium cladding
Color Blue, white-pigmented
Clear glass
External handle 7013
Protective rosette



Type 1112

LivingLine aluminium cladding
Color RAL 9016 Traffic white
Clear glass
External handle 7013
Protective rosette



Type 1112 Internal view

Pine wood
Color KI 118 White, transparent
Clear glass
Internal knob 2005



Type 1210

ModernLine aluminium cladding
Color RAL 7035 Light grey
Frosted glass with clear strips and
integrated stainless-steel appliqué,
red stripes RAL 3003 Ruby red
External handle 7038
Protective rosette



Type 1210

ModernLine aluminium cladding
Color RAL 9001 Cream
Frosted glass with clear strips and
integrated stainless-steel appliqué,
red stripes RAL 3003 Ruby red
External handle 7038
Protective rosette



Type 1210

ModernLine aluminium cladding
Color DB 703
Frosted glass with clear strips and
integrated stainless-steel appliqué,
red stripes RAL 3003 Ruby red
External handle 7038
Protective rosette



Type 1210 Internal view

Pine wood
Color KI 146 Grey, transparent
Frosted glass with clear strips and
integrated stainless-steel appliqué,
red stripes RAL 3003 Ruby red
Internal knob 2002



Type 1211

ModernLine aluminium cladding
Color DB 703
Frosted glass with clear strips
External handle 7039
Protective rosette



Type 1211

ModernLine aluminium cladding
Color RAL 9001 Cream
Frosted glass with clear strips
External handle 7039
Protective rosette



Type 1211

ModernLine aluminium cladding
Color RAL 7035 Light grey
Frosted glass with clear strips
External handle 7039
Protective rosette



External handle made from stainless steel



Type 1211 Internal view

Pine wood
Color KI 144 Beige grey, transparent
Frosted glass with clear strips
Internal knob 2003



UNILUX'S DOOR LINE ELEGANCE

Personal.
Playful.
Confident.

For a designer, a front door may just be the functional connection between inside and outside. But it's actually a lot more. It's your house's business card. The visible access point to your unique, individual home. That's why it can reflect your individuality and show the outside world who you are.

The ELEGANCE line plays masterfully with geometric shapes by combining aesthetics and dynamics and giving modern architecture a strong, individual character.

The ELEGANCE line – setting the tone.





Type 1116

ModernLine aluminium cladding
Color RAL 3016 Coral red
Glass 847 (Clear glass with sand-
blasting and integrated glass rods)
External handle 7044
Flush protective rosette
Stainless-steel base



Type 1116

ModernLine aluminium cladding
Color RAL 9007 Grey aluminium
Clear glass
External handle 7044
Flush protective rosette



Type 1116

ModernLine aluminium cladding
Color RAL 1013 Oyster white
Punto glass
External handle 7044
Flush protective rosette



Type 1116 Internal view

Pine wood
Color KI 101 Light oak
Glass 847 (Clear glass with sand-
blasting and integrated glass rods)
Internal knob 2013



Type 1102

LivingLine aluminium cladding
Color RAL 3020 Traffic red
Flush stainless-steel pilaster strips
External handle 7034 indented
Protective rosette



Type 1102

LivingLine aluminium cladding
Colors RAL 6010 Grass green and
RAL 9016 Traffic white
External handle 7034 indented
Protective rosette
Stainless-steel base



Type 1102

LivingLine aluminium cladding
Colors RAL 3001 Signal red and
RAL 7035 Light grey
Flush stainless-steel pilaster strips
External handle 7034 indented
Protective rosette
Stainless-steel base



Type 1102 Internal view

Pine wood
Color KI 137 transparent matt
Cross-veneered
Internal knob 2006



Type 1103

- LivingLine aluminium cladding
- Colors RAL 7047 Telegrey 4 and RAL 9016 Traffic white
- External handle 7029 indented
- Flush protective rosette



Type 1103

- LivingLine aluminium cladding
- Color DB 703
- External handle 7029 indented
- Flush protective rosette
- Stainless-steel base



Type 1103

- LivingLine aluminium cladding
- Color RAL 3001 Signal red
- Flush stainless-steel pilaster strip
- External handle 7029 indented
- Flush protective rosette



Type 1103 Internal view

- Larch wood
- Color LR 149 American Cherry
- Cross-veneered
- Internal knob 2006



Type 1111

ModernLine aluminium cladding
Colors RAL 3020 Traffic red
and RAL 7015 Slate grey
Glass 845 (Sandblasting on Reflo,
one red square)
External handle 7043 indented
Square protective rosette
Stainless-steel base



Type 1111

ModernLine aluminium cladding
Color RAL 7011 Iron grey
Clear glass
External handle 7043 indented
Square protective rosette
Stainless-steel base



Type 1111

ModernLine aluminium cladding
Colors RAL 7015 Slate grey
and RAL 9016 Traffic white
Clear glass
External handle 7043 indented
Square protective rosette



Sandblasted glass



Type 1111 Internal view

Pine wood
Color KI 148 Cream, transparent
Glass 845 (Sandblasting on Reflo,
one red square)
Internal knob 2014



Type 1117

ModernLine aluminium cladding
Colors RAL 7015 Slate grey and RAL 7047 Telegrey 4
Glass 848 (Float with sandblasting, and six partly frosted glass stones)
External handle 7048
Flush protective rosette
Stainless-steel base



Type 1117

ModernLine aluminium cladding
Color DB 703
Glass 848 (Float with sandblasting, and six partly frosted glass stones)
External handle 7048
Flush protective rosette
Stainless-steel base



Type 1117

ModernLine aluminium cladding
Colors RAL 3005 Wine red and RAL 7035 Light grey
Reflo glass
External handle 7048
Flush protective rosette



Type 1117 Internal view

Pine wood
Color KI 118 White, transparent
Glass 848 (Float with sandblasting, and six partly frosted glass stones)
Internal knob 2010



Type 1119

ModernLine aluminium cladding
Color Grey, white-pigmented
Glass 850 (Glass with sandblasting
pattern and Swarovski stones)
External handle 6001
Flush protective rosette



Type 1119

ModernLine aluminium cladding
Color DB 703
Glass 850 (Glass with sandblasting
pattern and Swarovski stones)
External handle 6001
Flush protective rosette
Stainless-steel base



Type 1119

ModernLine aluminium cladding
Colors RAL 5020 Ocean blue and
RAL 7016 Anthracite grey
Reflo glass
External handle 6001
Flush protective rosette



Type 1119 Internal view

Larch wood
Color LR 141 transparent matt
Glass 850 (Glass with sandblasting
pattern and Swarovski stones)
Internal knob 2011



Type 1120

LivingLine aluminium cladding
Color RAL 9007 Grey aluminium
Glass 851 (Float with sandblasting strips and three chiselled glass stones)
External handle 7048
Flush protective rosette



Type 1120

LivingLine aluminium cladding
Color RAL 9016 Traffic white
Embedded stainless-steel pilaster strip
Ocean Blue glass
External handle 7048
Flush protective rosette



Type 1120

LivingLine aluminium cladding
Color RAL 3001 Signal red
Signal red Embedded stainless-steel pilaster strip
Punto glass
External handle 7048
Flush protective rosette
Stainless-steel base



Type 1120 Internal view

Pine wood
Color KI 145 Cedar
Ocean Blue glass
Internal knob 2008



Type 1116

Color RAL 3004 Purple red



Type 1119

Color RAL 5020 Ocean blue



Type 1111

Color RAL 7011 Iron grey



Type 1118

LivingLine aluminium cladding
Colors RAL 7016 Anthracite grey
and RAL 9016 Traffic white
Glass 849 (Glass with sandblasting
pattern and Swarovski stones)
External handle 7040
Flush protective rosette
Stainless-steel base



Type 1118

LivingLine aluminium cladding
Colors RAL 3004 Purple red
and RAL 9006
White aluminium
Clear glass
External handle 7040
Flush protective rosette



Type 1118

LivingLine aluminium cladding
Color RAL 7040 Window grey
Reflo glass
External handle 7040
Flush protective rosette
Stainless-steel base



Type 1118 Internal view

Pine wood
Color KI 137
transparent matt
Reflo glass
Internal knob 2002



Type 1121

LivingLine aluminium cladding
Color RAL 1013 Oyster white
Glass 852 (Sandblasting strips on
Reflo and three chiselled stones)
External handle 6001
Flush protective rosette



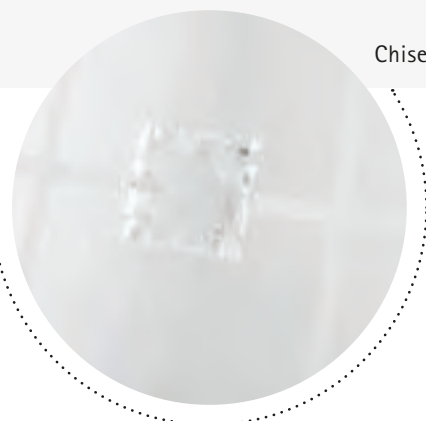
Type 1121

LivingLine aluminium cladding
Colors RAL 9002 Grey white and
RAL 7037 Dusty grey
Clear glass
External handle 6001
Flush protective rosette
Stainless-steel base



Type 1121

LivingLine aluminium cladding
Colors RAL 1013 Oyster white and
RAL 7015 Slate grey
Glass 852 (Sandblasting strips on
Reflo and three chiselled stones)
External handle 6001
Flush protective rosette
Stainless-steel base



Chiselled stones as a highlight of the glass



Type 1121 Internal view

Larch wood
Color LR 137 transparent matt
Glass 852 (Sandblasting strips on
Reflo and three chiselled stones)
Internal knob 2010



Type 1122

LivingLine aluminium cladding
Color DB 703
Glass 853 (Reflo with sandblasting strips and six chiselled glass stones)
External handle 7024
Flush protective rosette
Stainless-steel base



Type 1122

LivingLine aluminium cladding
Color RAL 7044 Silk grey
Ocean Blue glass
External handle 7024
Flush protective rosette



Type 1122

LivingLine aluminium cladding
Colors RAL 1015 Light ivory and RAL 7016 Anthracite grey
Glass 853 (Reflo with sandblasting strips and six chiselled glass stones)
External handle 7024
Flush protective rosette
Stainless-steel base



Type 1122 Internal view

Larch wood
Color LR 144 Beige grey, transparent
Glass 853 (Reflo with sandblasting strips and six chiselled glass stones)
Internal knob 2001



Type 1123

LivingLine aluminium cladding
Colors RAL 7015 Slate grey
and RAL 9016 Traffic white
Reflo glass
External handle 7034
Flush protective rosette



Type 1123

LivingLine aluminium cladding
Colors RAL 3020 Traffic red
and RAL 7015 Slate grey
Reflo glass
External handle 7034
Flush protective rosette
Stainless-steel base



Type 1123

LivingLine aluminium cladding
Color RAL 7011 Iron grey
Glass 854 (Sandblasting strips on
Reflo and two glass stones)
External handle 7034
Flush protective rosette
Stainless-steel base



Glass stones and sandblasted pattern as a highlight of the glass



Type 1123 Internal view

Pine wood
Color KI 141 Mahagoni II
Cross-veneered
Glass 854 (Sandblasting strips on
Reflo and two glass stones)
Internal knob 2012



Type 1124

LivingLine aluminium cladding
Color RAL 7016 Anthracite grey
Glass 855 (Reflo with sandblasting pattern and three glass stones)
External handle 7028
Flush protective rosette



Type 1124

LivingLine aluminium cladding
Colors RAL 3004 Purple red and RAL 9016 Traffic white
Flush stainless-steel pilaster strips
Lava glass
External handle 7028
Flush protective rosette
Stainless-steel base



Type 1124

LivingLine aluminium cladding
Colors RAL 7016 Anthracite grey and RAL 7035 Light grey
Glass 855 (Reflo with sandblasting pattern and three glass stones)
External handle 7028
Flush protective rosette



Type 1124 Internal view

Larch wood
Color LR 142 Jatoba
Glass 855 (Reflo with sandblasting pattern and three glass stones)
Internal knob 2008



Type 1127

ModernLine aluminium cladding
Colors RAL 7015 Slate grey
and RAL 9001 Cream
Punto glass
External handle 7043
Square protective rosette



Type 1127

ModernLine aluminium cladding
Colors RAL 3005 Wine red, RAL
7015 Slate grey, RAL 9016 Traffic
white, stainless steel
Clear glass
External handle 7043
Square protective rosette



Type 1127

ModernLine aluminium cladding
Color RAL 3004 Purple red
Clear glass
External handle 7043
Square protective rosette



Multi-colored doors



Type 1127 Internal view

Alder wood
Color ER 137 matt
Cross-veneered
Clear glass
Internal knob 2014



Type 1125

- LivingLine aluminium cladding
- Color Blue, white-pigmented
- Flush stainless-steel pilaster strips
- Satinato glass
- External handle 7029 indented
- Flush protective rosette



Type 1125

- LivingLine aluminium cladding
- Color DB 703
- Flush stainless-steel pilaster strips
- Horizontal BiCannes glass
- External handle 7029 indented
- Flush protective rosette
- Stainless-steel base



Type 1125

- LivingLine aluminium cladding
- Color RAL 3004 Purple red
- Punto glass
- External handle 7029 indented
- Flush protective rosette
- Stainless-steel base



Type 1125 Internal view

- Larch wood
- Color LR 144 Beige grey, transparent
- Punto glass
- Internal knob 2006



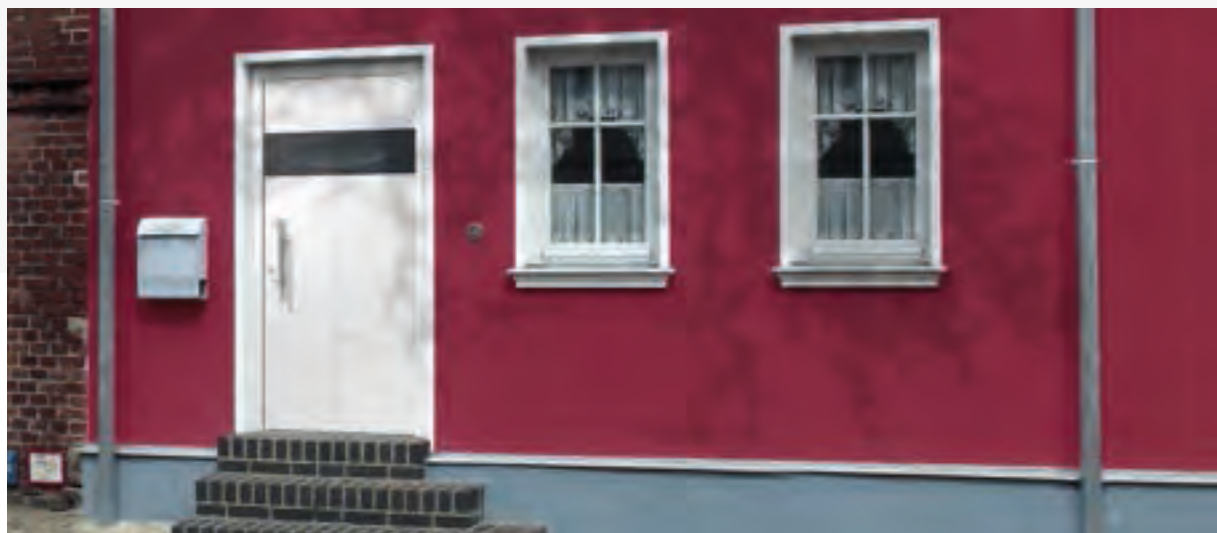
Type 1127

Color RAL 3004 Purple red



Type 1122

Color DB 703



Type 1123

Colors RAL 7015 Slate grey and RAL 9016 Traffic white



UNILUX'S DOOR LINE HISTORY

Classic.
Balanced.
Clear.

There are shapes and colours which transcend fashions. Designs which have proven their worth over decades or even centuries and will continue to do this into the future.

The HISTORY line stands for a style which blends harmoniously into the overall look. It is intended for renovated older houses, and for tradition-conscious architecture.

The HISTORY line – As good as before.





Type 1203

LivingLine aluminium cladding
Color RAL 7015 Slate grey
Punto glass
External handle 7039
Protective rosette



Type 1203

LivingLine aluminium cladding
Color RAL 3004 Purple red and stainless steel
Vertical Basis Madras glass
External handle 7039
Protective rosette



Type 1203

LivingLine aluminium cladding
Color Blue, white-pigmented and stainless steel
Reflo glass
External handle 7039
Protective rosette



Type 1203 Internal view

Larch wood
Color LR 143 Tobacco
Reflo glass
Internal knob 2002



Type 1204

LivingLine aluminium cladding
Color RAL 1015 Light ivory
Reflo glass
External handle 5000 with
cylinder cover



Type 1204

LivingLine aluminium cladding
Color RAL 9016 Traffic white
White Gothic glass
External handle 5000 with
cylinder cover



Type 1204

LivingLine aluminium cladding
Color RAL 7016 Anthracite grey
White Gothic glass
External handle 5000 with
cylinder cover



Type 1204 Internal view

Pine wood
Color KI 147 Tineo
White Gothic glass
Internal knob 2200



Type 1205

LivingLine aluminium cladding
Color RAL 3005 Wine red
White Gothic glass
External handle 5000 with
cylinder cover



Type 1205

LivingLine aluminium cladding
Color Green, white-pigmented
White Gothic glass
External handle 5000 with
cylinder cover



Type 1205

LivingLine aluminium cladding
Color RAL 7016 Anthracite grey
White Gothic glass
External handle 5000 with
cylinder cover



Type 1205 Internal view

Oak wood
Color EI 150 Golden Oak
White Gothic glass
Internal knob 2200



Type 1206

LivingLine aluminium cladding
Color RAL 3004 Purple red
Glass FG160 (Lead glass with black frame)
External handle 7001
Protective rosette



Type 1206

LivingLine aluminium cladding
Color RAL 7015 Slate grey
White Gothic glass
External handle 7001
Protective rosette



Type 1206

LivingLine aluminium cladding
Color RAL 9016 Traffic white
Glass FG160 (Lead glass with black frame)
External handle 7001
Protective rosette



Type 1206 Internal view

Pine wood
Color KI 118 White, transparent
Glass FG160 (Lead glass with black frame)
Internal knob 2204 (Polished brass)



Type 1207

LivingLine aluminium cladding
Color RAL 7015 Slate grey
Uadi glass
External handle 7001
Protective rosette



Type 1207

LivingLine aluminium cladding
Color RAL 3004 Purple red
Clear glass
External handle 7001
Protective rosette



Type 1207

LivingLine aluminium cladding
Color Green, white-pigmented
Uadi glass
External handle 7001
Protective rosette



Type 1207 Internal view

Exotic wood
Color ME 140 Walnut, transparent II
Uadi glass
Internal knob 2204 (Polished brass)



Type 1208

LivingLine aluminium cladding
Color RAL 9001 Cream
White Gothic glass
External handle 7001
Protective rosette



Type 1208

LivingLine aluminium cladding
Color RAL 3004 Purple red
White Gothic glass
External handle 7001
Protective rosette



Type 1208

LivingLine aluminium cladding
Color Grey, white-pigmented
Baroque glass
External handle 7001
Protective rosette



Furniture-quality wood



Type 1208 Internal view

Oak wood
Color El 137 transparent matt
White Gothic glass
Internal knob 2204 (Polished brass)



Type 1209

LivingLine aluminium cladding
Color RAL 5004 Black blue
Glass FG605 (Faceted stones on Satinato)
External handle 7001
Protective rosette



Type 1209

LivingLine aluminium cladding
Color RAL 7038 Agate grey
Glass FG605 (Faceted stones on Satinato)
External handle 7001
Protective rosette



Type 1209

LivingLine aluminium cladding
Color RAL 9001 Cream
Glass FG605 (Faceted stones on Satinato)
External handle 7001
Protective rosette



Type 1209 Internal view

Exotic wood
Color ME 141 Mahagoni II
Glass FG605 (Faceted stones on Satinato)
Internal knob 2204 (Polished brass)



Type 1208

Color RAL 1013 Oyster white



Type 1206

Color RAL 9016 Traffic white



Type 1205

Color Green, white-pigmented



UNILUX SIDE DOORS

Versatile.
Attractive.
Reliable.

No compromises. For its side doors, UNILUX uses the same strict requirements as it does for its aluminium clad wood entry doors. That's why these doors are attractive not only visually, but also from a quality standpoint.

Get a picture of them: Processing and material are at the same high level you expect from a UNILUX aluminium clad wood entry door. That lets our side doors to blend harmoniously into the overall construction in every way.

Quality throughout – UNILUX side doors.



As pretty as they are rock-solid.

They look great, and they last. The models in the UNILUX side door series are individual works of art that – matching your architecture – set esthetic accents.

And for the long term, too. High-quality materials and accurate machining are your guarantee that you'll enjoy your UNILUX side door for years to come.



Recommendation

Combination plate with glass

Color RAL 6009 fir green
Flutes blank matte glass vertical
External handle 4004

Inside: Wood: pine
Color tone KI 147 Tineo



Recommendation

Complete with plate

Color RAL 7015 slate gray
External handle 4005

Inside: Wood type oak
Color tone EI 137 transparent matte



Aluminium clad wood side door handles

The handles for aluminium clad wood side doors are available in white, brown, silver, and steel colors.



4004



4005



Recommendation

Combination plates with glass

Color DB 703

Punto glass

External handle 4005

Inside: Wood type Alder

Color tone ER 137 transparent matte



Recommendation

Combination plate, glass, muntins

Color Ral 9016 traffic white

Clear glass

External handle 4004

Inside: Wood type oak

Color tone EI 150 Golden Oak





Just the way you are

Customised freedom of design.

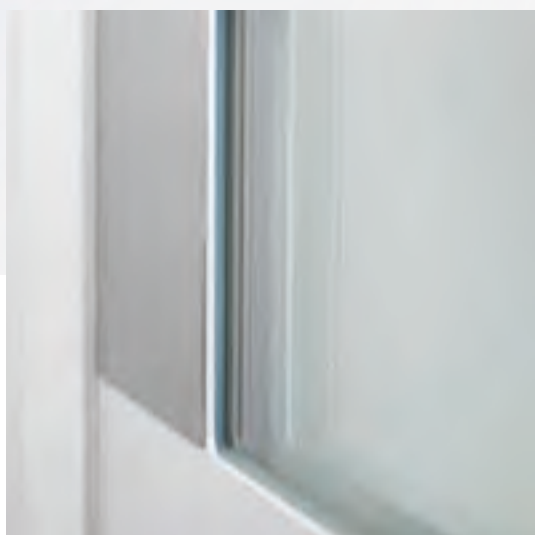
How many different tastes are there?

Around 2 million when it comes to models, colors and woods for aluminium clad wood entry doors. Because that's how many combination options you have for your individual UNILUX product.

See which wood goes best with which color, and which décor matches the aluminium cladding.

That way, you'll find a front door which is not just "half-decent", but rather perfectly suited to your taste. An individual piece distinct from millions of other doors.

That's how UNILUX offers individuality works.

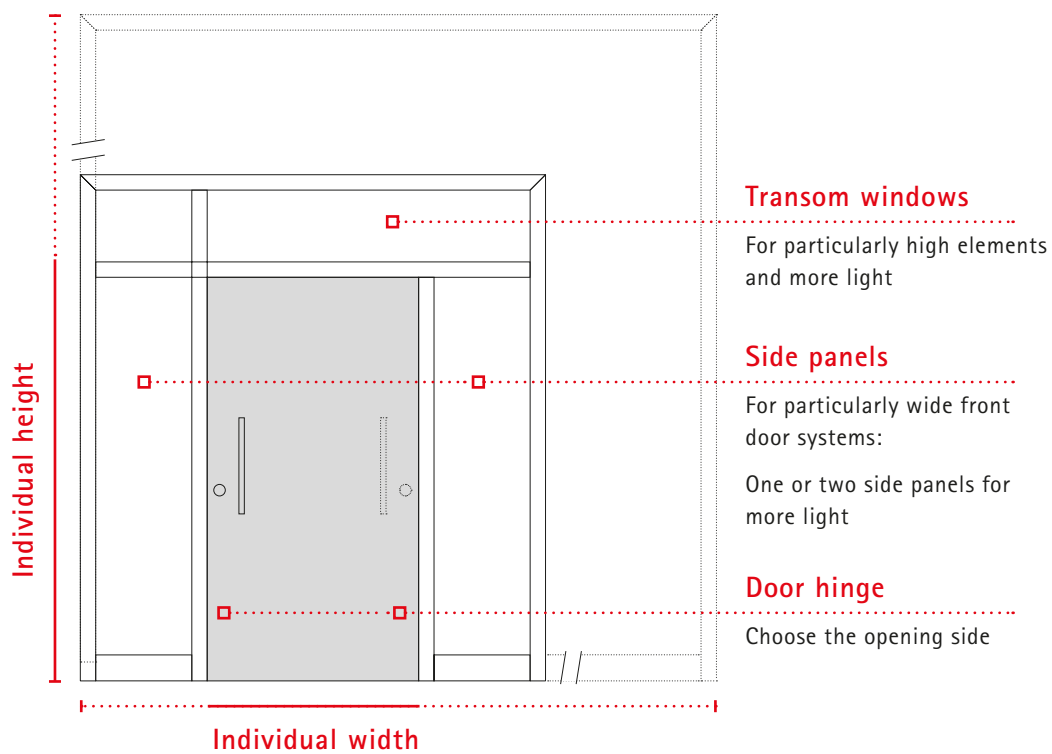


Freedom of choice in size and shape

Fits like a glove

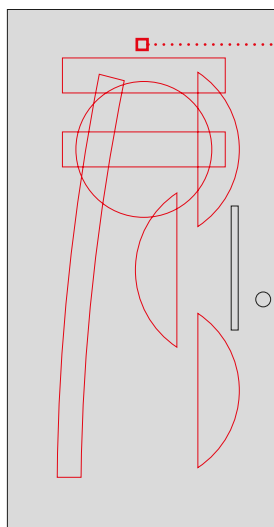
How big should a front door be? Which way should it open? Is it better to have one or two panels? And how much daylight should the door let in? These are questions each person will answer differently.

That's why UNILUX not only offers you customised front doors with your requested lengths and width, but also with the options of your choice. For example, with one or two side panels and transom windows. Elements which accentuate your door and add extra design features.



Let there be light

Entry halls don't have to be pitch-dark. Cut-out sections in the front door, glass side panels and transom windows brighten up hallways without the need for light bulbs, making your entrance area cosier. Light supplied for free by nature.



Cut-out sections

Square or porthole? Symmetrical fields or bold curves? As with all its other features, UNILUX also offers a multitude of cut-out options to choose from.

Variety for more individuality.



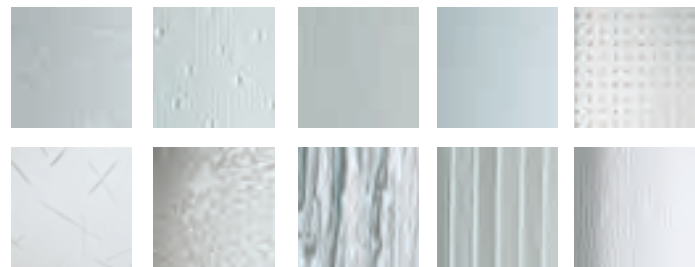


Chic in a shell

You can even tailor the aluminium cladding to suit your design. Choose from the subtly rounded LivingLine or the purist ModernLine. In over 2,100 colors, or even multi-colored.

More than just light

Not all glass is the same. Just think how varied this familiar material can be. From simple ornamental glass to striking designer glass.



Getting a grip on design

Sweeping brass or straight-lined stainless steel? Historically classic or minimalistically modern? Each UNILUX handle is not only a solid piece of handicraft, but also an aesthetic gem allowing you to express your taste and style.



Base

Many models also have the option of a robust, flush stainless-steel support.

Freedom to choose materials and colors



Exterior: Protective aluminium

Each UNILUX door not only matches your house's architecture, but also its color scheme. Because you can choose from no less than 2,132 colors and shades: RAL colors, NCS colors, DB colors / Eloxal colors, white-pigmented colors and wood effects.

Ask your UNILUX specialty retailer for the color guides, so you can be sure your door is made in your favourite red (or favourite grey or favourite blue etc.).



RAL colors
Wood effects
DB & metallic colors
NCS colors

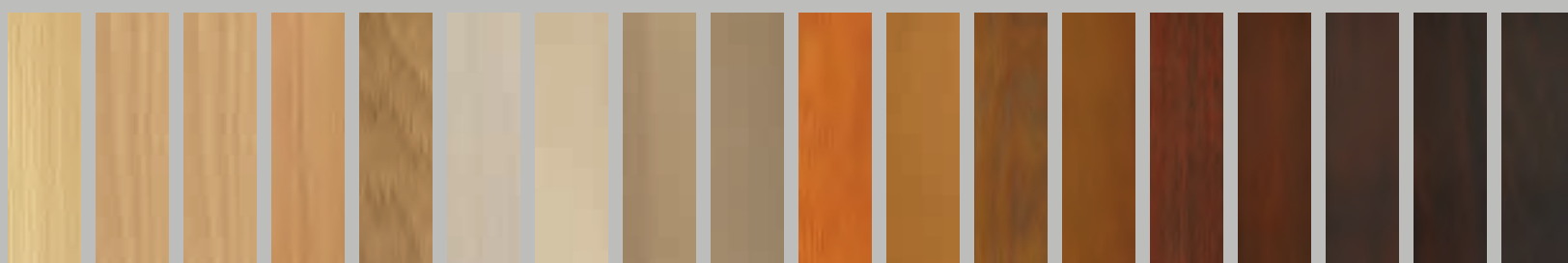


Interior: Cosy wood

Individuality not just on the exterior: You can choose from 5 wood types (alder, oak, pine, larch and exotic wood), 24 glazes (transparent or semi-transparent), and around 200 solid RAL colors to design the interior side of your UNILUX door.

Ensuring your front door blends harmoniously into the rest of your interior décor.





Choose from the following wood types: Pine, oak, alder, larch and exotic wood, as well as from 20 transparent or semi-transparent finishes.

Live the way you are – naturally individual: UNILUX aluminium clad wood entry doors



Crystal-clear style

Glass and glass varieties

Glass is a special material which gives every door its own individual character. We offer an extensive variety of front-door glass types – as well as personalised design suggestions for each door, allowing you to create your very own style even when selecting the glass.

UNILUX glass impresses customers because it lets natural light in, but prevents outsiders from seeing in. Each of our ornamental and design glass products is proof that beauty and function don't have to be polar opposites.

UNILUX – Glass can be so unique.





Temptation alert!

This sample case could cause a commotion. Because it shows you what's possible when it comes to glass. It doesn't always have to "just be smooth". Ornamental and design glass add structure and oomph to a familiar material.

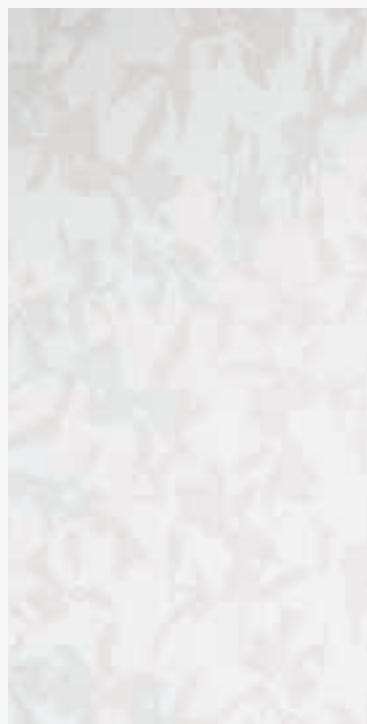
Ask your UNILUX specialty retailer in person. They'll gladly open the UNILUX glass sample case for you.



Madras Flos



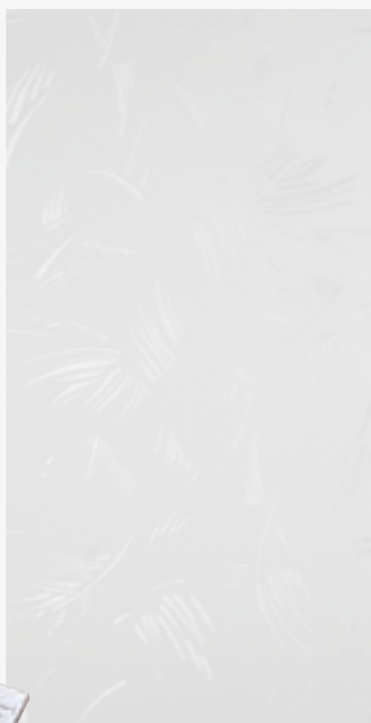
Uadi white



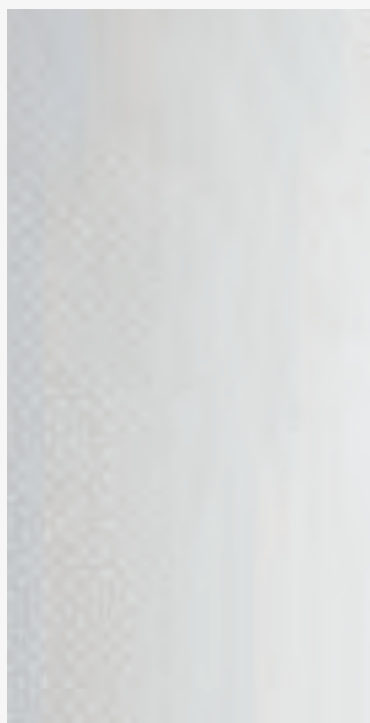
Weed



BiCannes



Flamme



Punto white



Satinato



Pave matt white

Live the way you are – naturally individual: UNILUX aluminium clad wood entry doors



A handle on aesthetics

Hardware

A door handle must be tough – not everyone will be treating it with kid gloves. Robustness is thus a basic requirement for a good handle. But we're not just interested in the material quality – appearance is also important to us.

A UNILUX door handle always creates an inviting feel. It complements the architecture, and is the icing on the cake for a model door.

UNILUX door handles – nice to hold, impressive to look at.



7042

L 1,600 mm



7043

L 500 mm



7049

L 697 mm



7048

L 408 mm



7038

L 600 mm



7039

L 1,000 mm



7026

L 600 mm



7027

L 800 mm



7040

L 400 mm



7041

L 800 mm



7044

L 382 mm



7045

L 600 mm



7046

L 720 mm



7028

L 600 mm



7029

L 800 mm



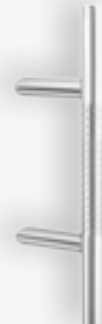
7030

L 1,000 mm



7035

L 400 mm



7036

L 600 mm



7037

L 1,200 mm



7047

L 585 mm



7034

L 400 mm



7033

L 400 mm



7031

L 600 mm



7005

L 480 mm



7025

L 500 mm



7018

L 500 mm



7004

L 504 mm



7016

L 515 mm



7003

L 600 mm



7014

L 600 mm



7015

L 650 mm



7012

L 330 mm



7024

L 330 mm



7010

L 330 mm



7011

L 330 mm



7013

L 335 mm



7019

L 335 mm



7022

L 400 mm



7009

L 380 mm



7008
.....
L 2,000 mm



7007
.....
L 1,800 mm



7002
.....
L 400 mm



7017
.....
L 325 mm



7001
.....
L 300 mm



7000
.....
L 300 mm



6000
.....
Stainless steel



6001
.....
Stainless steel



6003
.....
Stainless steel



6002
.....
Brass



5000
.....
Brass



5004
.....
Brass



5003
.....
Stainless steel



2000
.....
Stainless steel



2000
.....
Brass



2001
.....
Stainless steel



2005
.....
Stainless steel



2006
.....
Stainless steel



2007
.....
Stainless steel



2011
.....
Stainless steel



2012
.....
Stainless steel



2013
.....
Stainless steel



2002
.....
Stainless steel



2003
.....
Stainless steel



2004
.....
Stainless steel



2008
.....
Stainless steel



2009
.....
Stainless steel



2010
.....
Stainless steel



2014
.....
Stainless steel



2200
.....
Brass



2204
.....
Brass





Security

Not popular among thieves

Burglars are always pressed for time. The harder you make things for them, the quicker they give up. That's why UNILUX is not only concerned with design and comfort, but also with safety devices and locks. And this should never be compromised – a belief we take to heart in our daily work.

Good to know: Even the basic UNILUX front doors have effective safety mechanisms. We also offer additional devices which further enhance the standard safety features.

That way, UNILUX does its bit towards ensuring unwanted guests are kept out.





Solid door structure with an end-to-end lock faceplate

When it comes to security, the more you have the better. The more solid the door, the more resistant it will be to offenders. With thicknesses of up to 3 1/8" / 79 mm, all models offer robust natural protection.

All our models have an end-to-end metal lock faceplate in the frame. This means that, since the locking mechanism is generally firmly fixed into the closing sections, the potential perpetrator would have to smash the entire plate out of the door frame – involving a lot of extra effort and significantly inhibiting the burglar.



Three/four-point locking devices and automatic locking

Even the standard UNILUX front doors are fitted with an effective three-point locking device with two self-locking bolts. When pulled tightly, these securely and automatically lock the door in two places – at the top and the bottom. The door can be opened normally using the handle or a key.



For more demanding systems, we offer the option of an electronic self-locking device which securely locks your door electronically via remote control or fingerprint.



Door catches

More effective and more elegant than a door chain.

The optional door catch serves as an additional interior lock, and as a safety catch when the door is easily opened, making it impossible for uninvited guests to get a foot in the door.



Anti-lift device

All UNILUX front doors come with two anti-lift devices on the hinge side, significantly inhibiting force entries caused by jimmying.

Safety glass

Thanks to a specially developed, highly tear-proof polycarbonate film, the optional safety glass stays intact even if the normal glass cracks – good for you, bad for potential burglars. The UNILUX's anti-vandal A1 safety glass is incidentally certified by the German National Authority on Fire Arms and Ammunition.





Page 12
Model 1100



Page 13
Model 1101



Page 14
Model 1104



Page 15
Model 1105



Page 16
Model 1106



Page 18
Model 1107



Page 19
Model 1109



Page 20
Model 1108



Page 21
Model 1110



Page 22
Model 1113



Page 24
Model 1114



Page 25
Model 1115



Page 26
Model 1126



Page 27
Model 1128



Page 28
Model 1201



Page 30
Model 1202



Page 31
Model 1112



Page 32
Model 1210



Page 33
Model 1211



Page 36
Model 1116



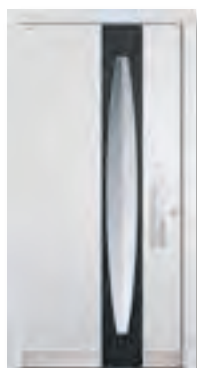
Page 37
Model 1102



Page 38
Model 1103



Page 39
Model 1111



Page 40
Model 1117



Page 41
Model 1119



Page 42
Model 1120



Page 44
Model 1118



Page 45
Model 1121



Page 46
Model 1122



Page 47
Model 1123



Page 48
Model 1124



Page 49
Model 1127



Page 50
Model 1125



Page 54
Model 1203



Page 55
Model 1204



Page 56
Model 1205



Page 57
Model 1206



Page 58
Model 1207



Page 59
Model 1208



Page 60
Model 1209



Page 64
Recommendation 1



Page 64
Recommendation 2

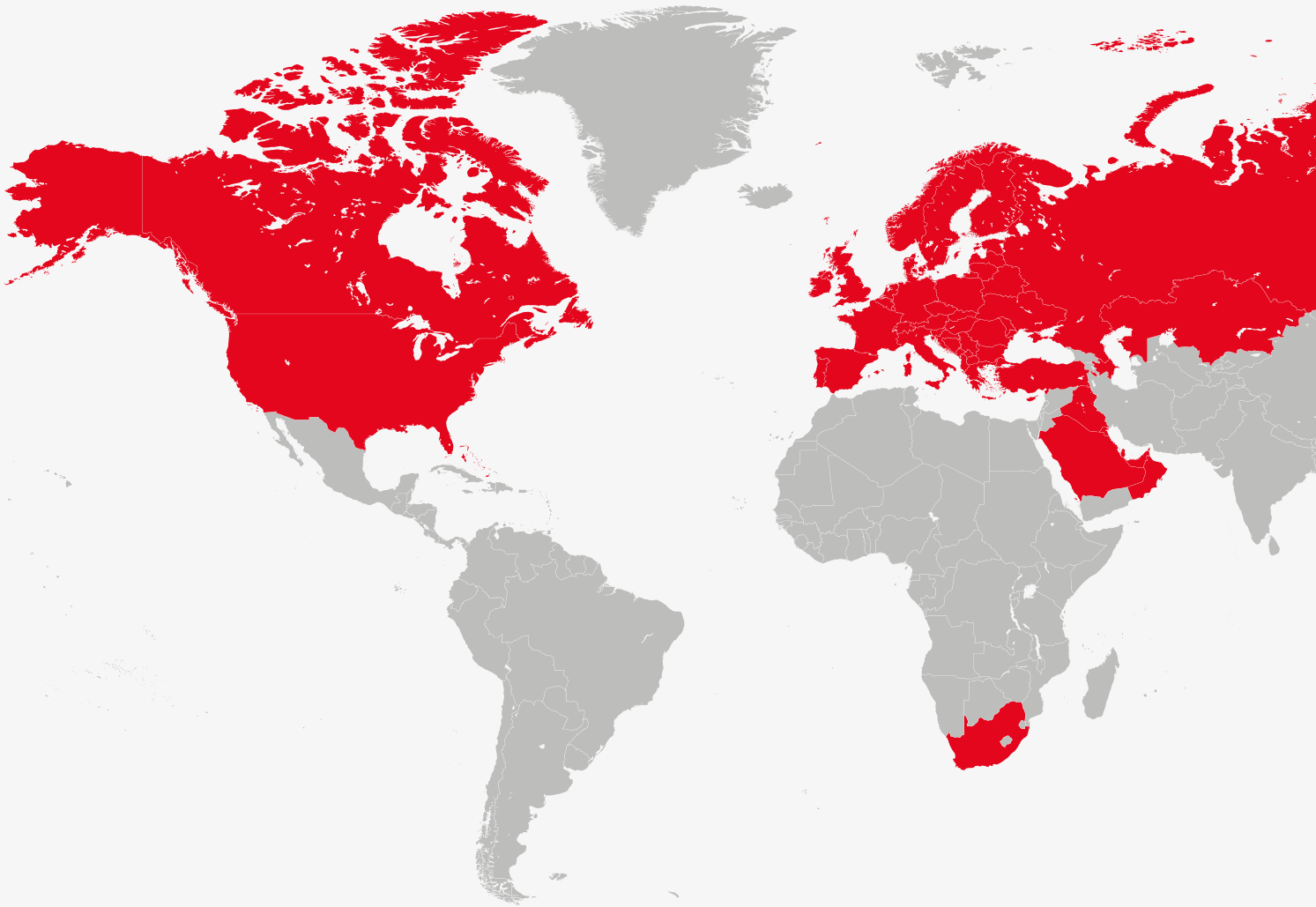


Page 65
Recommendation 3



Page 65
Recommendation 4

The reliability of a big name



UNILUX ensures award-winning long-term progress
- by selecting the right partners and raw-material suppliers, and by being a member of leading institutions and associations:



UNILUX products meet international test and safety standards:



Company info

Publisher

UNILUX GmbH
54528 Salmtal / Germany
Telephone +49(0)6578/189-0
Facsimile +49(0)6578/1880
Email info@unilux.de
www.unilux.de



Notes

The content of this catalogue is not legally binding and may be subject to technical changes as part of further developments or errors in the text, images or descriptions. We only allow images and text material – including excerpts – to be used upon request, and with our express written consent.

The image material used is for illustrative purposes. Differences in colour are unfortunately unavoidable due to printing. The sample illustrations are not to scale.

© 2015, UNILUX GmbH. All rights reserved.



UNILUX headquarters, Salmtal

UNILUX GmbH
54528 Salmtal / Germany

Telephone +49 (0) 65 78 / 189-0

Facsimile +49 (0) 65 78 / 18 80

E-Mail info@unilux.de

www.unilux.de



WHERE QUALITY IS AT HOME